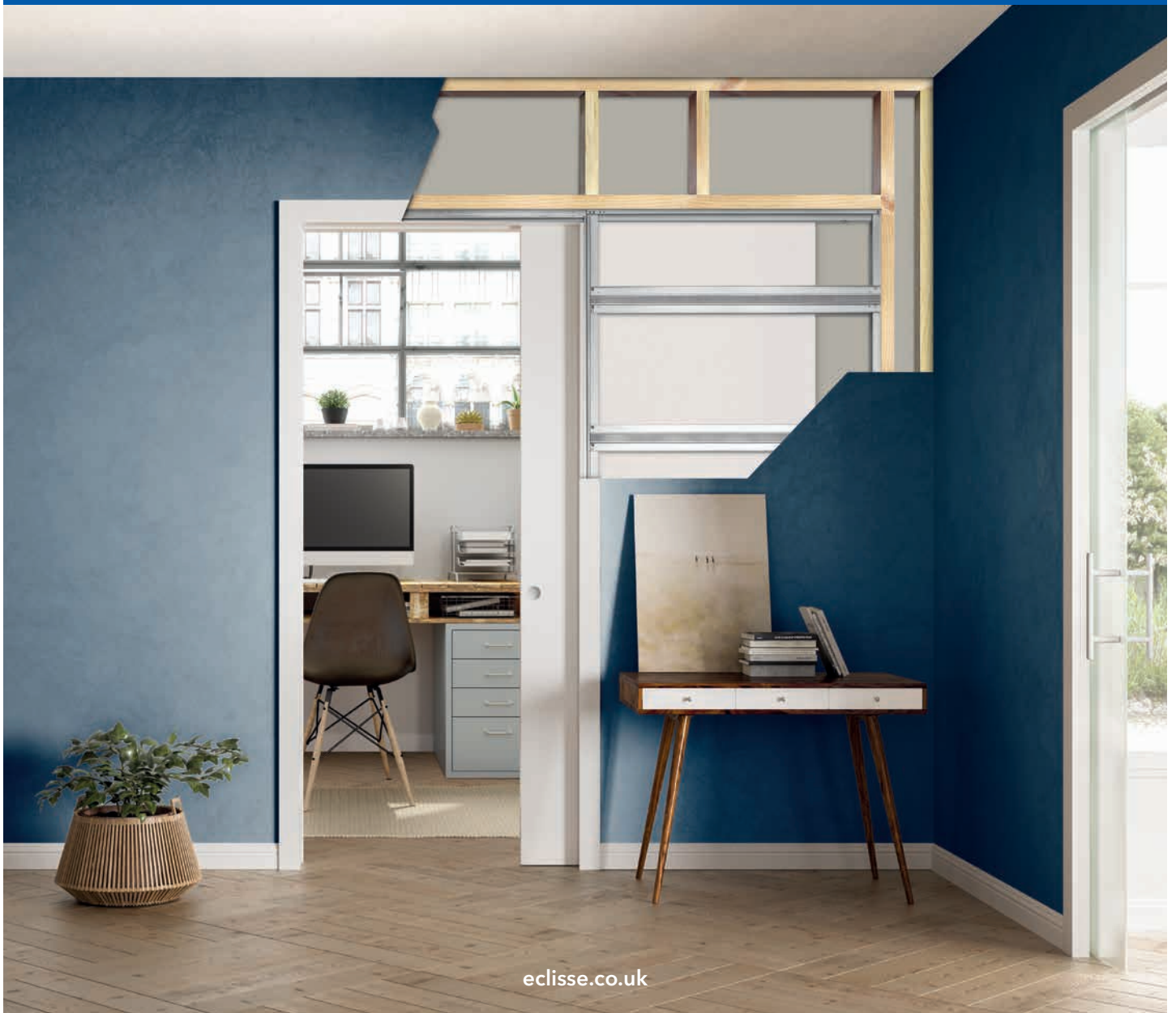


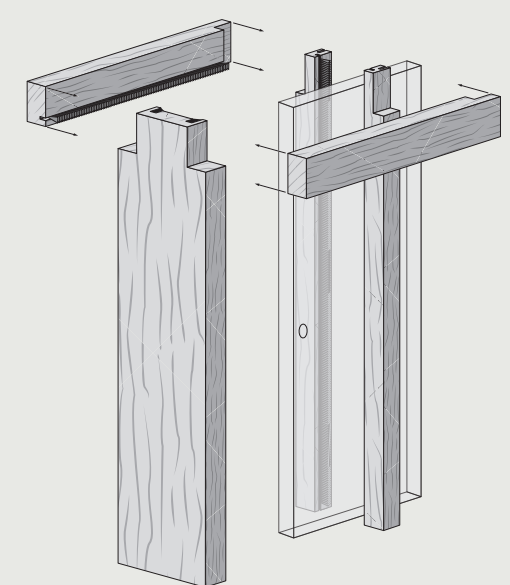
A GUIDE TO POCKET DOORS



QUICK START



THE FRAMEWORK WITH TRACK
AND RUNNING GEAR IN TOP



JAMBS - TIMBER LINING KIT
TO COVER THE EDGES OF THE DOOR

DOORS SLIDE INTO THE WALL



SINGLE



DOUBLE

INDEX

WHAT IS A POCKET DOOR?	4
------------------------	---

TYPES OF SYSTEM	6
-----------------	---

- ECLISSE CLASSIC - Architrave type
How to choose the size
- ECLISSE SYNTESIS® FLUSH - No architrave type
How to choose the size
- FIRE APPROVED

WHAT TYPE OF DOOR?	12
--------------------	----

- Wood
- Glass

UNIQUE SELLING POINTS	14
-----------------------	----

INSTALLATION	15
--------------	----

- ECLISSE CLASSIC
- ECLISSE SYNTESIS® FLUSH

ACCESSORIES and DOOR FURNITURE	19
--------------------------------	----

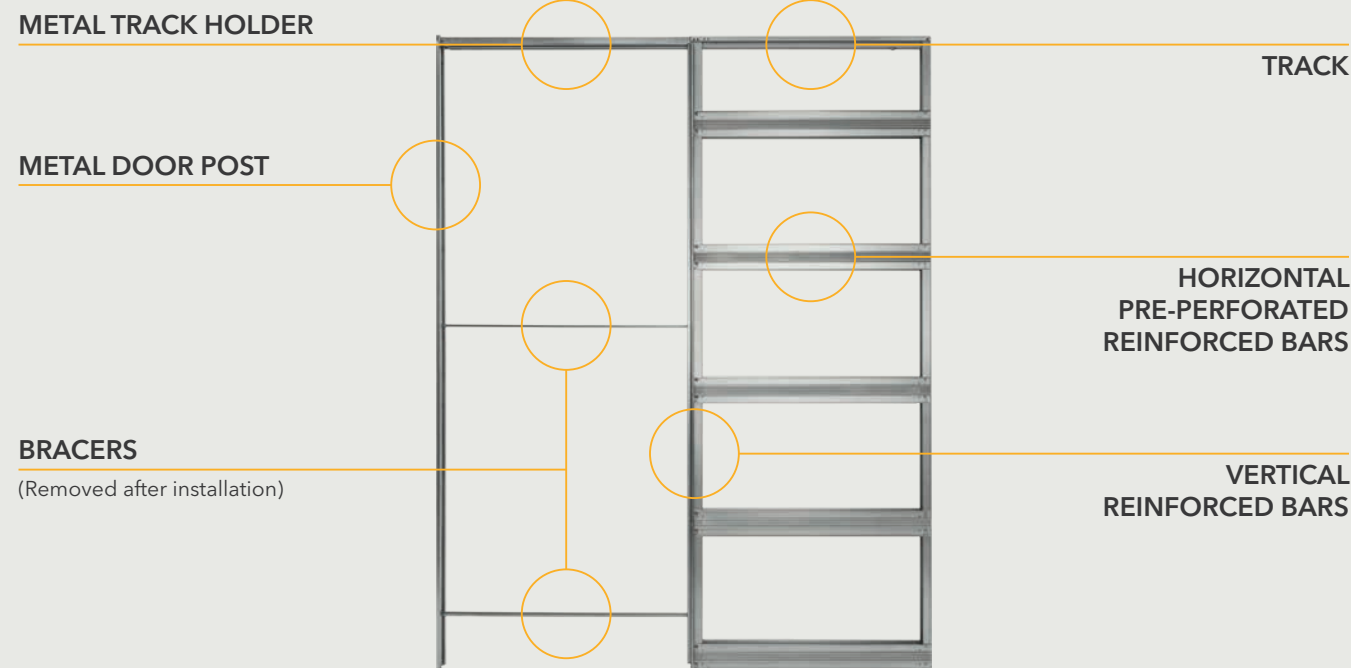
FAQ's	21
-------	----

© 2022 ECLISSE, all rights reserved - The use, filing and total or partial reproduction, using any mechanical or electronic means, of texts, drawings and pictures contained in this publication is strictly prohibited, unless specifically approved in writing by ECLISSE.

WHAT IS A POCKET DOOR?

A pocket door is a door that is top-hung and slides back into a pocket inside the wall. The frame is made from high quality galvanised (corrosion resistant) steel that is specially formed to make it stronger.

The door is top hung from runners in the track so there is no track on the floor.



The ECLISSE pocket door frame comes in kit form in a box. It assembles into a strong pocket which connects to the header that holds the track and a metal doorpost.



Once assembled the frame is installed into the studwork as a complete unit.

- 'Quick-Click' frame - quick and easy to assemble.
- Everything is provided with the kit.
- Different pocket thickness are available 70mm, 75mm, 90mm, and 100mm to suit different studwork (see [page 17](#)).
- Use your own standard UK size timber door, 35mm to 44mm thick.



IMPORTANT

ECLISSE does not supply timber doors or decorative architraves. The ECLISSE system comes in standard sized kits to fit standard UK size doors. So you pick the kit to fit your door and you can match the door to the other doors in the property.

WHAT IS A POCKET DOOR?

SINGLE POCKET DOOR SYSTEM

HOW DO THEY WORK?

Here you can see how the metal framework attaches to the surrounding studwork to create the pocket for the door. The pocket is then plaster boarded over.

The picture here shows the plasterboard cut away so you can see the system.



metal studwork

or

wooden studwork

DOUBLE POCKET DOOR SYSTEM

STUDWORK

ECLISSE Pocket Door Systems work with timber stud (CLS, Scant, construction timber, etc.) and C-shaped metal stud.



TYPES OF SYSTEM

CLASSIC OR FLUSH? What style do you prefer?



Requires finishing with architrave.
For information about the CLASSIC style see [page 7](#).



No architrave required.
For information about the SYNTESIS® FLUSH style see [page 10](#).

APPROVED FOR 30 MIN FIRE DOORS

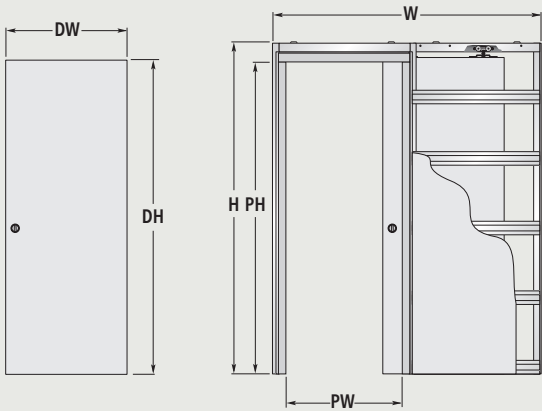
We have a single and double CLASSIC 30 minute fire-rated pocket door system that is fully approved for use with standard 44mm FD30 timber fire doors.

TYPES OF SYSTEM

ECLISSE CLASSIC SYSTEM

FINISH OFF WITH ARCHITRAVE

STANDARD FRAME



Requires finishing off with decorative architrave.
This system comes with a specially designed timber lining/jamb kit (see [page 9](#)) for use with wooden or glass doors (see [page 12&13](#)).

👉 HOW TO CHOOSE THE SIZE

The CLASSIC SINGLE and CLASSIC DOUBLE Pocket Door Systems come in a variety of pocket thicknesses - 70, 75, 90 and 100mm (see [page 17](#) for matching your pocket thickness to your studwork).

From the table below choose the kit that matches your door size or alternatively if you know the overall space you have choose an overall frame dimension to fit that space.

DOOR PANELS UK		SINGLE DOOR	DOUBLE DOOR
		OVERALL DIMENSION	OVERALL DIMENSION
DW	DH	W x H	W x H
626	2040	1294 x 2115	2494 x 2115
726	2040	1494 x 2115	2894 x 2115
826	2040	1694 x 2115	3294 x 2115
926	2040	1894 x 2115	3694 x 2115
1026	2040	2094 x 2115	4094 x 2115
2ft. 0in. x 6ft. 6in. (610 x 1981 mm)		1279 x 2056	2464 x 2056
2ft. 3in. x 6ft. 6in. (686 x 1981 mm)		1455 x 2056	2816 x 2056
2ft. 6in. x 6ft. 6in. (762 x 1981 mm)		1631 x 2056	3168 x 2056
2ft. 9in. x 6ft. 6in. (838 x 1981 mm)		1707 x 2056	3320 x 2056
3ft. 0in. x 6ft. 6in. (914 x 1981 mm)		1894 x 2056	3694 x 2056
2ft. 4in. x 6ft. 6in. (711 x 1981 mm)		1469 x 2056	2844 x 2056
2ft. 8in. x 6ft. 8in. (813 x 2032 mm)		1669 x 2105	3244 x 2105
2ft. 10in. x 6ft. 8in. (864 x 2032 mm)		1844 x 2105	3594 x 2105

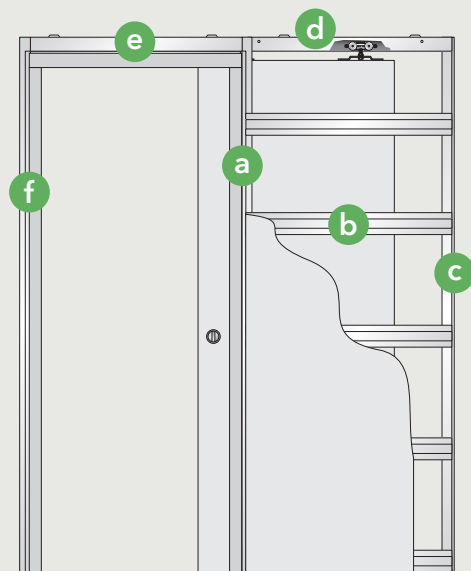
Where not specified, dimensions are given in mm

TYPES OF SYSTEM

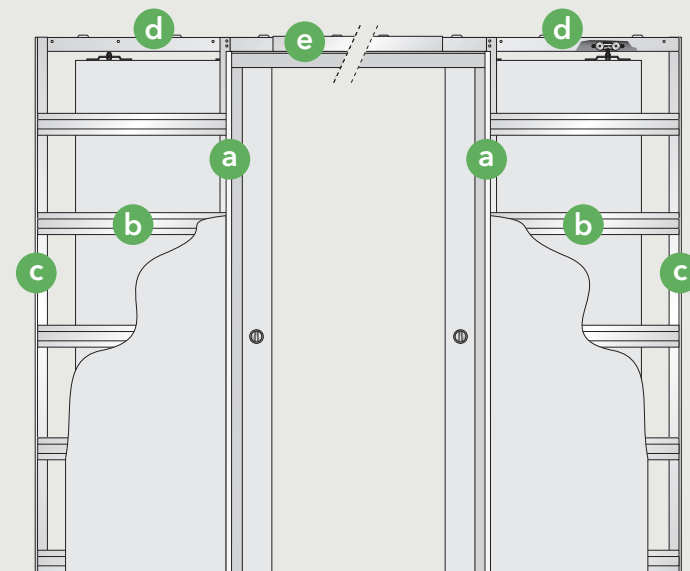
ECLISSE CLASSIC SYSTEM

ECLISSE manufacture systems for single and double doors.

SINGLE DOOR EXAMPLE

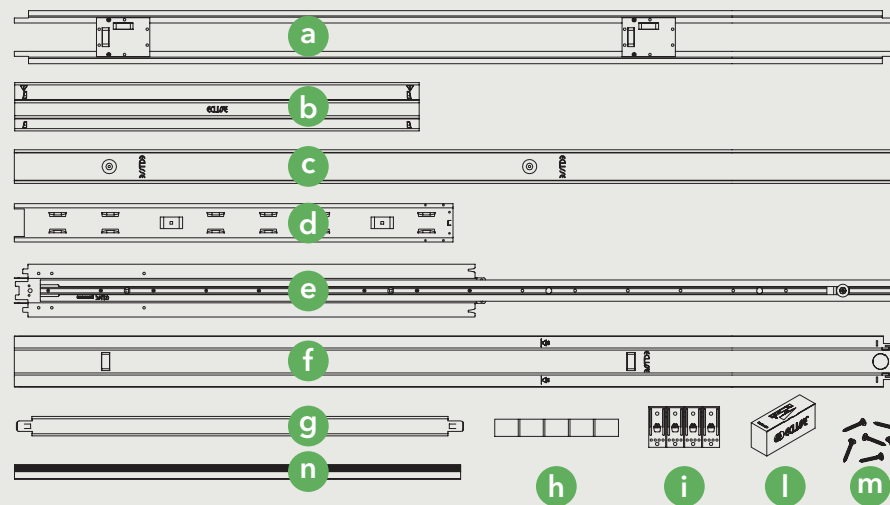


DOUBLE DOOR EXAMPLE



LIST OF PARTS

This is what is included in the box with the frame.



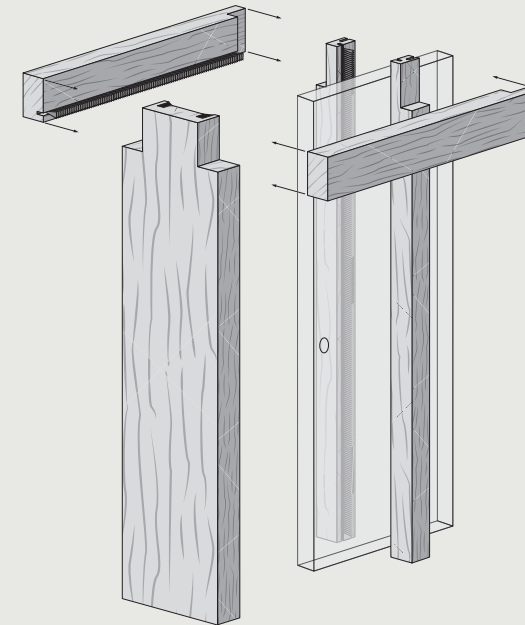
METAL FRAMEWORK SINGLE KIT CONTENTS

- | | |
|------------------------|-----------------------------|
| a. Central vertical | g. Bracers (2 pcs) |
| b. Pocket horizontals | h. Polystyrene spacers |
| c. Rear vertical | i. Pocket-to-floor brackets |
| d. Pocket header | l. Door mounting kit |
| e. Top beam with track | m. Pack of screws |
| f. Metal door post | n. Anti-warp profile |

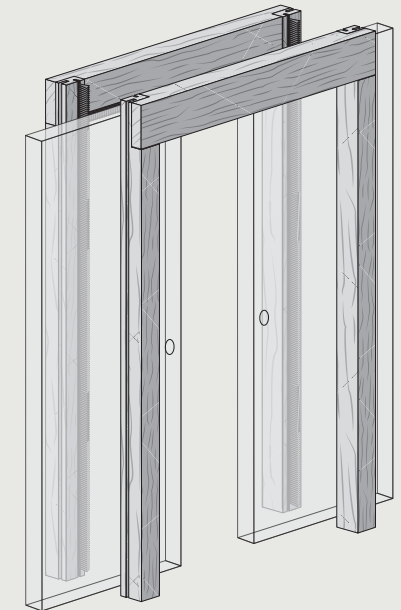
PLEASE NOTE THE DOOR POST **f** IS NOT SUPPLIED WITH THE DOUBLE SYSTEM

TYPES OF SYSTEM

JAMBS FOR SINGLE DOORS



JAMBS FOR DOUBLE DOORS



SPECIALLY DESIGNED JAMB KIT

The jamb kit is a timber lining kit that is attached to the pocket door framework that covers the edges of the door when it is closed so you cannot see the top of the door or into the pocket. It gives the pocket door installation a professional finish.

The jambs come with a beechwood veneer that is paint or stain ready.

Note: ECLISSE do not supply the decorative architrave required to finish off the installation. This gives you the option to choose an architrave style to match the rest of the property.



- A. Top horizontal header pieces, supplied as one length, to be cut into 2 as required.
- B. 2x pocket entrance verticals (one for each side of the pocket entrance).
- C. 1x recessed doorpost - supplied only for the single pocket door system.
- s. Silver grey brushes - 2 sets of brushes supplied for 35mm and 44mm thick doors.
- g. White rubber bumpers - pull apart to create 2 strips of bumpers.

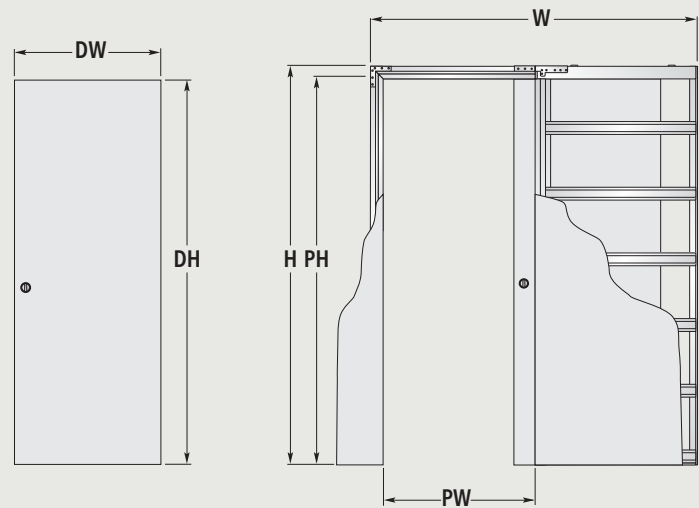
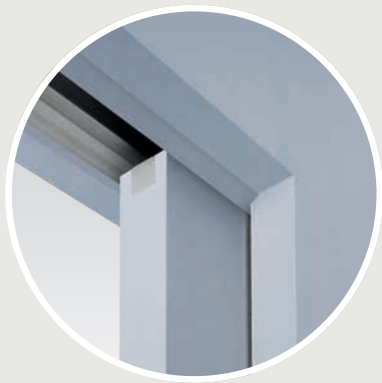


FSC® C121832

TYPES OF SYSTEM

FLUSH WALL SYSTEM

FLUSH WALL SYSTEM STANDARD FRAME



DOES NOT REQUIRE ANY DECORATIVE ARCHITRAVE.

HOW TO CHOOSE THE SIZE

The Syntesis® Flush Pocket Door System comes in a variety of pocket thicknesses - 75, 100 and 125mm for a finished wall thicknesses of 100, 125 and 150mm (i.e. the pocket thickness plus the 12.5mm

plasterboard add either side). From the table below choose the kit that matches your door size or alternatively if you know the overall space you have choose an overall frame dimension to fit that space.

DOOR PANELS UK		SINGLE DOOR	DOUBLE DOOR
		OVERALL DIMENSION	OVERALL DIMENSION
DW	DH	W x H	W x H
626	2040	1400 x 2108	2700 x 2108
726	2040	1600 x 2108	3100 x 2108
826	2040	1800 x 2108	3500 x 2108
926	2040	2000 x 2108	3900 x 2108
1026	2040	2200 x 2108	4300 x 2108
2ft. 0in. x 6ft. 6in. (610 x 1981 mm)		1384 x 2049	2668 x 2049
2ft. 3in. x 6ft. 6in. (686 x 1981 mm)		1560 x 2049	3020 x 2049
2ft. 6in. x 6ft. 6in. (762 x 1981 mm)		1736 x 2049	3372 x 2049
2ft. 9in. x 6ft. 6in. (838 x 1981 mm)		1812 x 2049	3524 x 2049
3ft. 0in. x 6ft. 6in. (914 x 1981 mm)		1988 x 2049	3876 x 2049
2ft. 4in. x 6ft. 6in. (711 x 1981 mm)		1575 x 2049	3050 x 2049
2ft. 8in. x 6ft. 8in. (813 x 2032 mm)		1775 x 2100	3450 x 2100
2ft. 10in. x 6ft. 8in. (864 x 2032 mm)		1925 x 2100	3750 x 2100

Where not specified, dimensions are given in mm

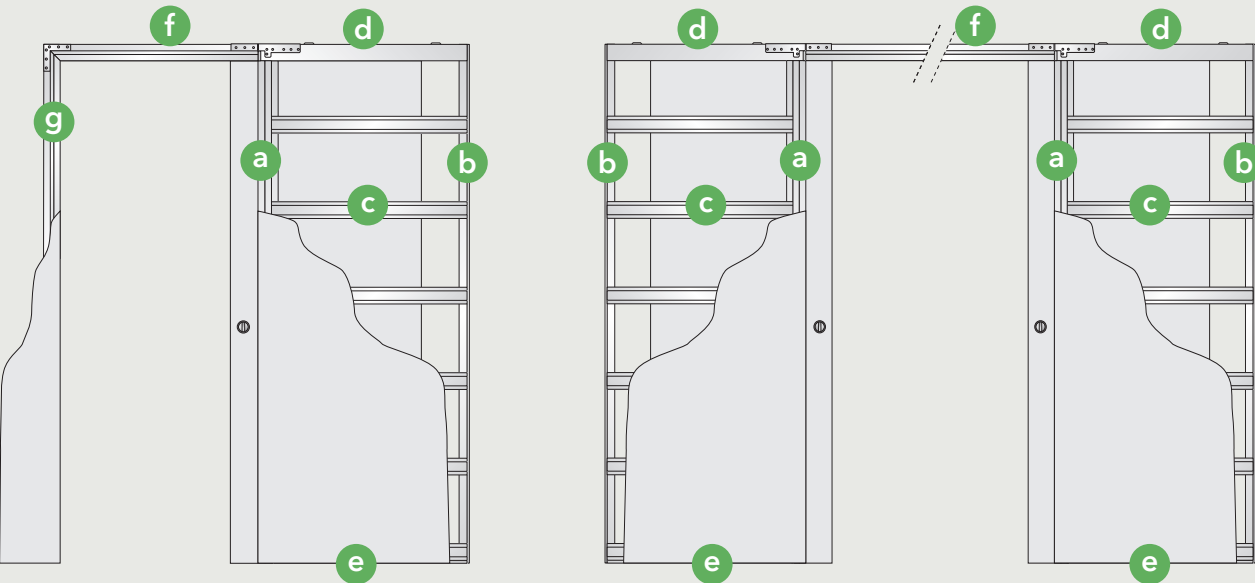
TYPES OF SYSTEM

ECLISSE SYNTESIS® FLUSH SYSTEM

A contemporary flush finish with no jambs or architraves, just wall - door - wall.

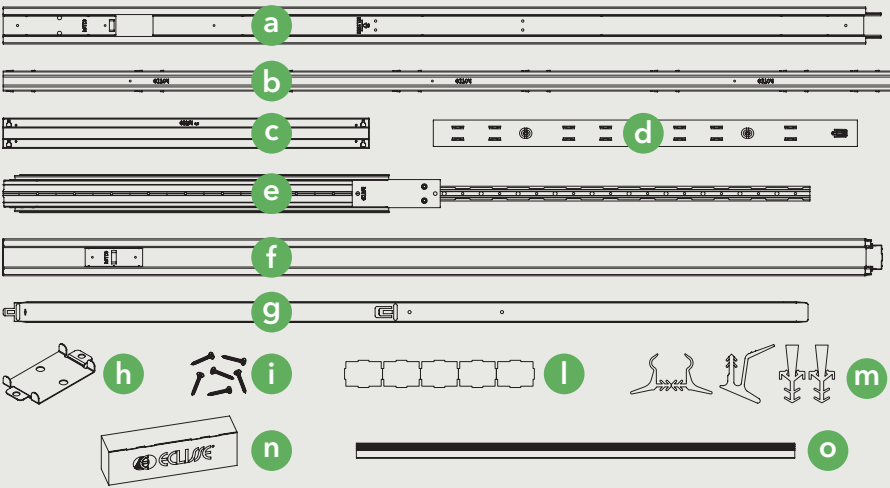
SINGLE DOOR EXAMPLE

DOUBLE DOOR EXAMPLE



LIST OF PARTS

This is what is included in the box with the frame.



METAL FRAMEWORK SINGLE KIT CONTENTS

- a. Central vertical
- b. Rear vertical
- c. Pocket horizontals
- d. Pocket header
- e. Top beam with track
- f. Metal door post
- g. Alignment bar (patented)
- h. Underdoor connection
- i. Packs of screws
- l. Polystyrene spacers
- m. Bumpers and brushes
- n. Door mounting kit
- o. Anti-warp profile

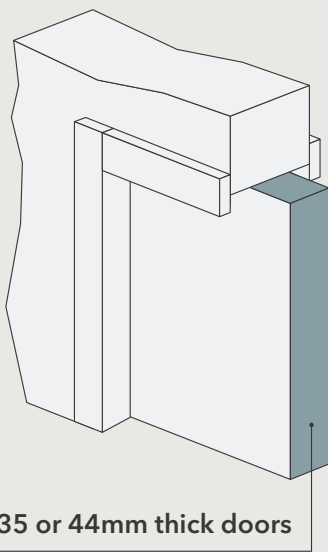
PLEASE NOTE THE DOOR POST **f** IS NOT SUPPLIED WITH THE DOUBLE SYSTEM

WHAT TYPE OF DOOR?

THE FLEXIBILITY TO USE YOUR OWN WOODEN DOOR

You can choose your own style of wooden door because our systems fit standard UK size door panels.

We don't supply wooden doors BUT we do supply an extensive range of beautiful Glass Pocket Doors.



35 or 44mm thick doors

kg
100

Maximum door weight is 100 kg



DOOR SIZE
W x H
626 x 2040
726 x 2040
826 x 2040
926 x 2040
1026 x 2040
2ft. 0in. x 6ft. 6in. (610 x 1981 mm)
2ft. 3in. x 6ft. 6in. (686 x 1981 mm)
2ft. 6in. x 6ft. 6in. (762 x 1981 mm)
2ft. 9in. x 6ft. 6in. (838 x 1981 mm)
3ft. 0in. x 6ft. 6in. (914 x 1981 mm)
2ft. 4in. x 6ft. 6in. (711 x 1981 mm)
2ft. 8in. x 6ft. 8in. (813 x 2032 mm)
2ft. 10in. x 6ft. 8in. (864 x 2032 mm)

Where not specified, dimensions are given in mm

WHAT TYPE OF DOOR?

FRAMELESS GLASS DOORS

ECLISSE Glass Pocket Door Systems come complete with an 8mm or 10mm tempered frameless glass door.

The beauty of a glass pocket door is that it is both functional and elegant; not just great for saving space but also a great way to maximise lights too.



WHAT IS SATIN GLASS?

Satin glass is clear glass that is acid etched and polished for an easy clean finish. The satin finish lets light in but obscures what you can see.



10 cm / 4 inches from the glass



30 cm / 12 inches from the glass



1 m / 40 inches from the glass

WHAT IS SANDBLASTING?

Sandblasting is a type of process like etching that can add delicate patterns onto the surface of the glass.

FOR MORE INFO ON GLASS DOORS TAKE A LOOK AT OUR WEBSITE AT eclisse.co.uk

ECLISSE UNIQUE SELLING POINTS

GUARANTEE AND TESTING



ECLISSE systems are guaranteed for 15 years use. But not only that, they have been comprehensively tested for strength and reliability via impact testing of the frame and durability of the runners to over 100,000 open and close cycles. That's around 25 years of normal use.

PEACE OF MIND



The ECLISSE system has been designed in such a way that the track and running gear are completely removable without ever having to break into the wall. The ECLISSE system is completely maintenance free however the track and runners are fully extractable should anything unforeseen happen (e.g. a child pushes a toy in to the track) or if you want to retrofit an accessory.

QUICK AND EASY INSTALLATION



ECLISSE Pocket Door Systems are made with the installer in mind. Every small detail has been considered from the self-centering door guide to the self-locking horizontals which click and lock into place in minutes. Installation videos are available at our YouTube channel www.youtube.com/user/eclisseUK

STRONG



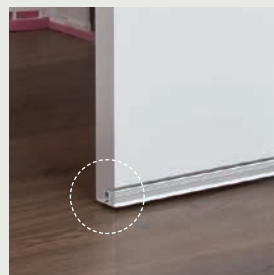
Strength is very important and these systems have been specially designed pocket entrance verticals to provide the necessary strength and rigidity.



ANTI-WARP

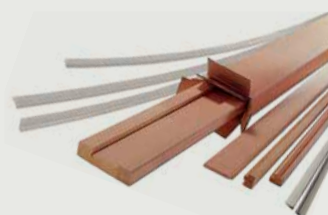


ECLISSE pocket door systems include a metal anti-warp profile in the kit because timber doors have a tendency to warp over time and can make the sliding movement uneven. The anti-warp profile helps to ensure a smooth sliding action continues over time even if the door warps.



COMPLETE WITH TIMBER LINING KIT

A quality timber lining kit for a professional finish.



INSTALLATION EXAMPLE

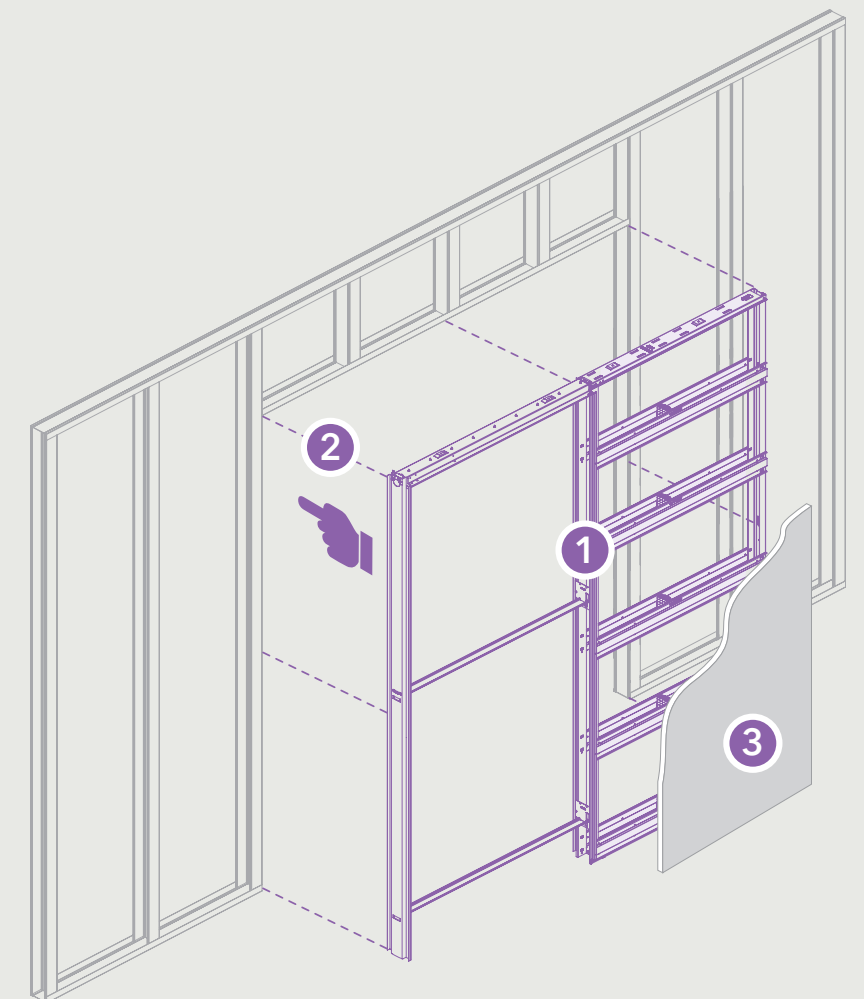
STANDARD COMES AS STANDARD!

use **STANDARD** doors, metric or imperial

use **STANDARD** door thicknesses 35 or 44mm

use **STANDARD** 12.5mm plasterboard (we even supply the screws!)

use **STANDARD** timber or metal stud i.e. CLS, Scant, construction timber, C-shape metal stud, etc.



YOU CAN FIT THE PLASTERBOARD AT ANYTIME AFTER THE FRAME INSTALLATION

1.	ASSEMBLE THE FRAME	15 minutes
2.	SCREW FRAME INTO THE STUDWORK	15 minutes
3.	INSTALL PLASTERBOARD	15 minutes
4.	INSTALL THE JAMBS	45 minutes

ALWAYS INSTALL AT FINISHED FLOOR LEVEL

INSTALLATION OF CLASSIC

STUD WALLS Choose from a wide range of pocket thicknesses to match the size of the studwork you are using.

WOODEN STUDWORK

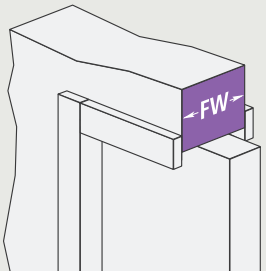


METAL STUDWORK



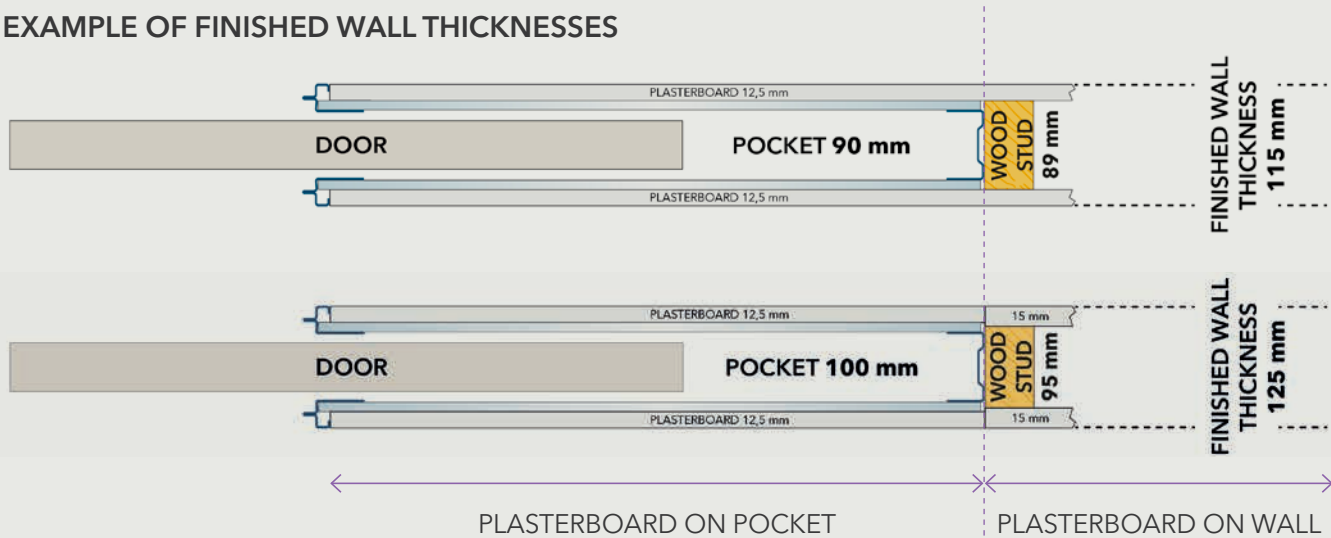
FINISHED WALL THICKNESS

When we talk about finished wall thickness it means pocket thickness the frame has been assembled to plus the layer of 12.5mm plasterboard either side.



Depending on the stud type/thickness you have chosen you may be able to use 12.5mm plasterboard down the rest of the wall or you may need to pack out the plasterboard on the rest of the wall (see the chart on [page 17](#)).

EXAMPLE OF FINISHED WALL THICKNESSES



INSTALLATION OF CLASSIC

STUD WORK Rapidly increasing in popularity, CLS - Canadian Lumber Standard, is typically 63 or 89mm thick.

Scant/Construction Timber - which can be 69mm or 95mm thick.



Our most popular **CLASSIC SINGLE** and **CLASSIC DOUBLE** Pocket Door Systems come in the widest range of pocket frame thicknesses i.e. 70mm, 75mm, 90mm and 100mm - see below.

DETERMINE YOUR STUD SIZE AND FINISHED WALL THICKNESS

Stud Work Type		Actual Stud Thickness	Frame Assembly	Finished Wall Thickness	Plasterboarding Options	
					On Pocket	On Rest of Wall
TIMBER STUD	Scant/Softwood Construction Timber 3"x2"/75x50mm	69mm	70mm	95mm	One 12.5mm layer each side	One 12.5mm layer each side
	CLS 3"x2"/75x50mm	63mm	70mm	95mm	One 12.5mm layer each side	One 6mm layer on stud work on 1 side + One 12.5mm layer each side
	Scant/Softwood Construction Timber 4"x2"/100x50mm	95mm	100mm	125mm	One 12.5mm layer each side	One 15mm layer each side
	CLS 4"x2"/100x50mm	89mm	90mm	115mm	One 12.5mm layer each side	One 12.5mm layer each side
METAL STUD	Metal Stud	70mm	70mm	95mm	One 12.5mm layer each side	One 12.5mm layer each side
		92mm	90mm	115mm	One 12.5mm layer each side	One 12.5mm layer each side

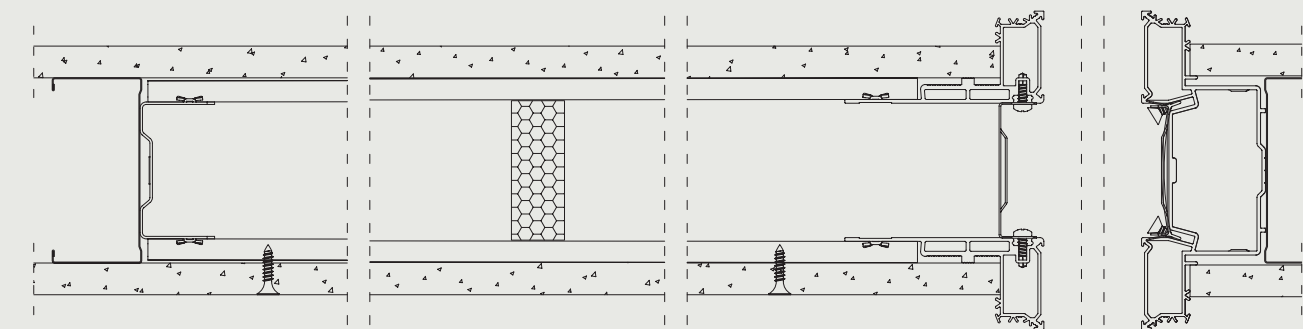
INSTALLATION OF SYNTESIS® FLUSH

STUD WORK Our SYNTESIS® FLUSH SINGLE and SYNTESIS® FLUSH DOUBLE Pocket Door Systems come in the traditional pocket thicknesses of 75mm and 100mm. See the chart to see how the final finished wall thickness of 100, 125 and 150mm are created.

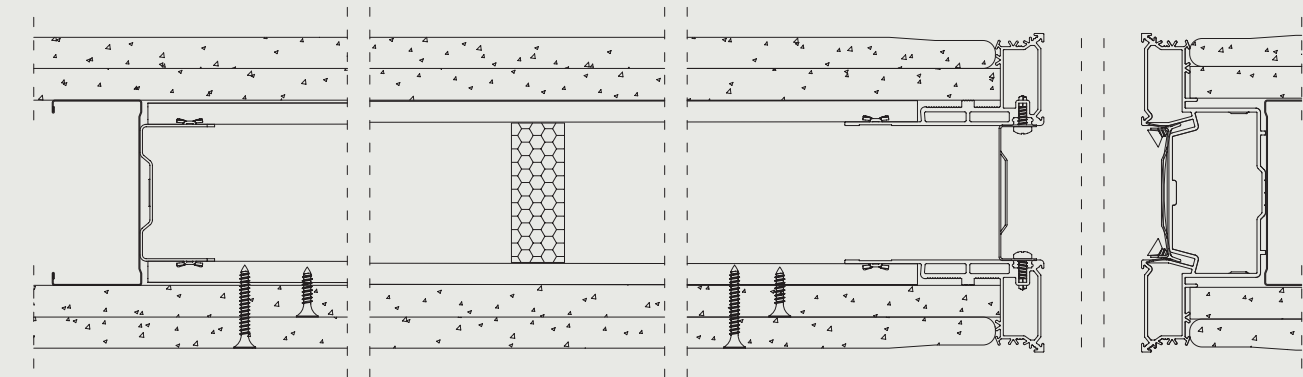
FRAME THICKNESS	PLASTERBOARD ON POCKET	FINISHED WALL THICKNESS
75mm	1 layer of 12.5mm both side	100mm
75mm wider edge profile to accommodate double boarding	2 layer of 12.5mm both side	125mm
100mm largest edge profile	2 layer of 12.5mm both side	150mm

EXAMPLE OF FINISHED WALL THICKNESSES

1 LAYER



2 LAYERS



ACCESSORIES

SOFT CLOSE WITH ANTI-SLAM



ECLISSE BIAS® - Built-In Anti-Slam
SOFT CLOSE WITH ANTI-SLAM TECHNOLOGY FOR SINGLE AND DOUBLE DOORS

This is a true anti-slam device that protects the door from being slammed on fingers by slowing it down towards the close position. Even when the door is slammed the ECLISSE BIAS® will slow the travel of the door as it closes.

- Invisible from the outside
- Easy to fit
- Can be retrofitted

BI-DIRECTIONAL SOFT CLOSE WITH ANTI-SLAM

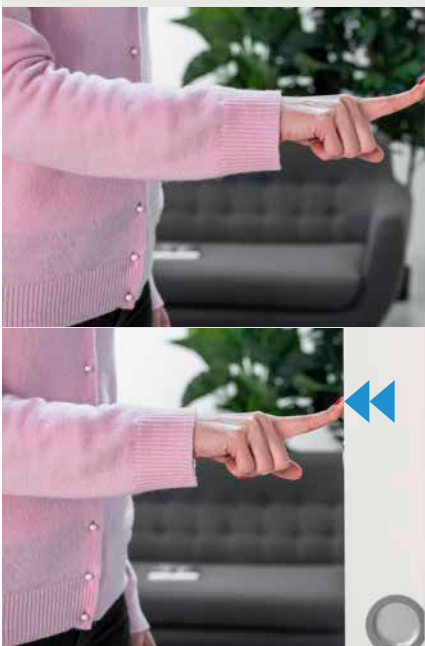


ECLISSE BIAS® DS - Built-In Anti-Slam Double Side
BI-DIRECTIONAL SOFT CLOSE WITH ANTI-SLAM TECHNOLOGY FOR SINGLE AND DOUBLE DOORS

All the benefits of the ECLISSE BIAS® but bi-directional. The ECLISSE BIAS® DS will soft-close the door as the door closes and also as it opens.

- Invisible from the outside
- Easy to fit
- Can be retrofitted
- Compatible with certain door sizes only (please check compatibility chart on website)

TOUCH LATCH



ECLISSE Touch Latch
SIMPLY PUSH THE LEADING EDGE OF THE DOOR AND THE DOOR IS RELEASED FROM THE POCKET

Enables a pocket door to sit fully flush back inside the pocket, removing the need for a leading edge finger pull. Push the leading edge of the door gently for it to then release allowing you to access the handle as normal.

- Invisible from the outside
- Easy to fit
- Compatible with ECLISSE BIAS®
- Can be used for single and double pocket door systems

Choose the **ECLISSE Syntesis® Touch Latch** for a Syntesis® Pocket Door.

DOOR FURNITURE

ESSENTIALS ROUND FLUSH PULL SET External Diameter 56mm



Note: for double doors order two sets

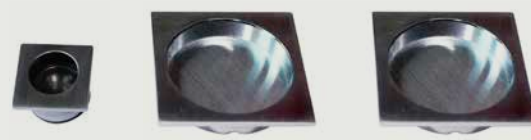
ESSENTIALS ROUND BATHROOM / PRIVACY LOCK SET External Diameter 56mm



ESSENTIALS SQUARE BATHROOM / PRIVACY LOCK SET 54.5 x 54.5 mm



ESSENTIALS SQUARE FLUSH PULL SET 54.5 x 54.5 mm



Note: for double doors order two sets



Both styles come with an internal thumb turn and emergency release.

Suitable for 35 and 44mm doors.

Each privacy lock set comes with a hook and latch mechanism.

FIRENZE ROUND FLUSH PULL SET External Diameter 57mm Finishes: PB - AB - PCR - SCR - BLK



FIRENZE HALF MOON FLUSH PULL SET External Diameter 57mm Finishes: PCR - SCR



FIRENZE ROUND PRIVACY / BATHROOM LOCK SET External Diameter 57mm Suitable for 35 and 44mm door panels Please specify when ordering Finishes: PB - AB - PCR - SCR - BLK



Note: This lock will not allow your door to go flush back into the pocket if installing with a Syntesis® Flush Pocket Door System.



FAQ's

FRAME?

- Q. DO ECLISSE FRAMES COME SUPPLIED WITH THE DOORS?**
A. No, you can use any standard size door panel you like, between 35 and 44mm thick, we have a frame to fit most standard sizes. We do however supply Glass Pocket Doors where the frameless glass door is supplied.
- Q. WHAT ARE THE LIMITS ON THE DOOR SIZES?**
A. If you have a non standard door panel size, between 35 and 44mm thick, we can supply a bespoke frame to fit. Maximum bespoke sizes vary for different products (see website for details).
- Q. DO I NEED A THRESHOLD?**
A. No the floor surface remains uninterrupted, you can continue it through the doorway.
- Q. DO YOU OFFER INSTALLATION?**
A. No, we supply only because these are relatively easy to assemble and install by Builders, Joiners or even competent DIYers.
- Q. WHAT GUARANTEE DO YOU OFFER?**
A. The ECLISSE steel system is guaranteed for 15 years against material or manufacturing defects.

JAMBS?

- Q. ARE THERE DIFFERENT JAMBS FOR DIFFERENT FRAMES?**
A. Jambs kits/timber lining kits are supplied with our Classic range of products (i.e. that require finishing off with decorative architrave). For the ECLISSE Classic Single and Classic Double systems you need to know your stud thickness and finished wall thickness when ordering to determine which jamb kit is relevant.
Note: Our FD30 products have a special jamb/architrave section that is supplied with the frame.
- Q. WHAT MATERIALS ARE THEY MADE OF?**
A. We supply high quality jambs are made for long term stability with an attractive beechwood veneer that can be painted or stained.
Note: Our FD30 jamb/architrave sections are made from a special high density slow burning wood.
- Q. SO WHO NEEDS A WOODEN DOOR POST?**
A. The recessed door post ensures that when your door is closed it will have a perfect closure line and not allow a chink of light through which is what can happen with a flat door post. Rubber bumpers fit into the recesses of the door post to soften the closing noise.

GLASS DOORS?

- Q. IS THE GLASS TOUGHENED?**
A. Our frameless glass doors are tempered (toughened) to the latest European standards. Care should always be taken when installing any glass door; if you were to drop it on a corner it would most likely break. However with our tempered glass doors, if this did happen, the glass would break safely into thousands of tiny pieces unlike a glass door that hasn't been tempered which would break into sharp sections of glass. You can see the glass tempering certificate in the technical section of our website.
- Q. CAN I HAVE MY OWN DESIGN?**
A. Within reason yes, we can even print your photo on the doors (hi res photo needed though).
- Q. WHAT ABOUT HANDLES?**
A. Take a look at www.eclisse.co.uk/Door-Furniture
- Q. WILL THE DOOR DROP DOWN OVER TIME?**
A. Our 10mm doors use an innovative design for attaching the brackets which avoids the type of slippage or tensions in the glass that can occur with other designs of bracket.



DON'T SCRATCH YOUR HEAD IF SOMETHING'S NOT CLEAR, GIVE US A CALL ON 0333 577 0828, YOU WILL FIND A FRIENDLY VOICE THAT CAN HELP YOU WITH ANY ASPECTS OF OUR PRODUCTS. YOU CAN ALWAYS USE THE QR CODE TO GO STRAIGHT TO OUR WEBSITE ECLISSE.CO.UK



ECLISSE UK Ltd - Richmond House - Occupation Lane - Gonerby Moor - Grantham - Lincs NG32 2BP
Tel 0333 577 0828 - info@eclisse.co.uk - eclisse.co.uk

Follow us on:



ECLISSE UK Ltd is an Employee Owned company with each employee being a full partner in the company.
That's why we strive every day to work to the highest possible standards and make every effort to meet and exceed your expectations.
