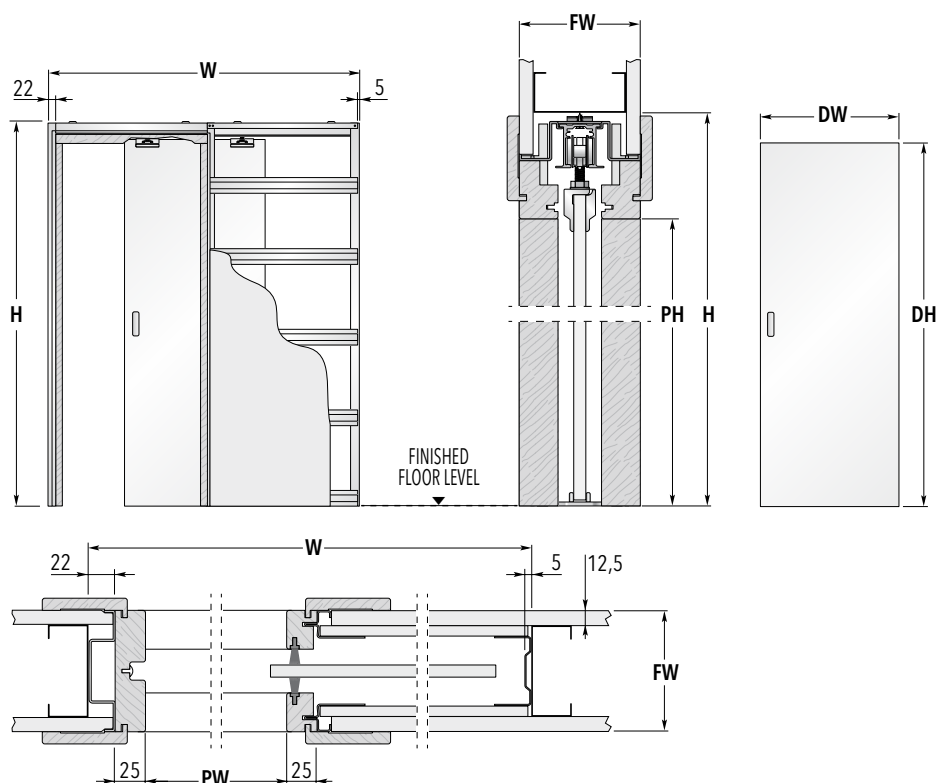
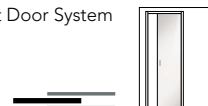


GLASS POCKET DOOR SINGLE - 8mm Glass

SINGLE POCKET DOORS SYSTEM



FRAMES FOR SINGLE DOORS			GLASS DOOR PANELS*	
MAX. PASSAGE SIZE PW x PH	OVERALL DIMENSION W x H	FINISHED WALL FW	DW	DH
737 x 1971	1631 x 2056	95 - 100 - 115 - 125	2ft. 6in. x 6ft. 6in. (762 x 1981 mm)	
800 x 2030	1694 x 2115	95 - 100 - 115 - 125	826	2040

Dimensions are given in mm



NOTES

- Supplied with 8mm glass door fully tempered to the latest European specifications.
- 8mm satin finish glass available in DW 762 x DH 1981 and DW 826 x DH 2040mm only.
- Includes full timber lining kit for a professional finish.
- Plasterboard and final architrave not supplied.
- When fitting flush pull handles we recommend the stop be regulated so the door protrudes from the pocket to avoid risk to fingers.
- Should the door be set to enter the pocket completely we do not accept any liability.
- Install at finished floor level.

* Nominal size.



ACCESSORIES

- **Door Furniture**
Flush pull
- **ECLISSE BIAS®**
Soft close up to 40 kg with anti-slam*
- **ECLISSE BIAS® DS**
Bi-directional soft close up to 40 kg with anti-slam*

* Above a door panel weight of 40 kg the anti-slam will still work but the door may not close completely against the doorpost of its own accord.